



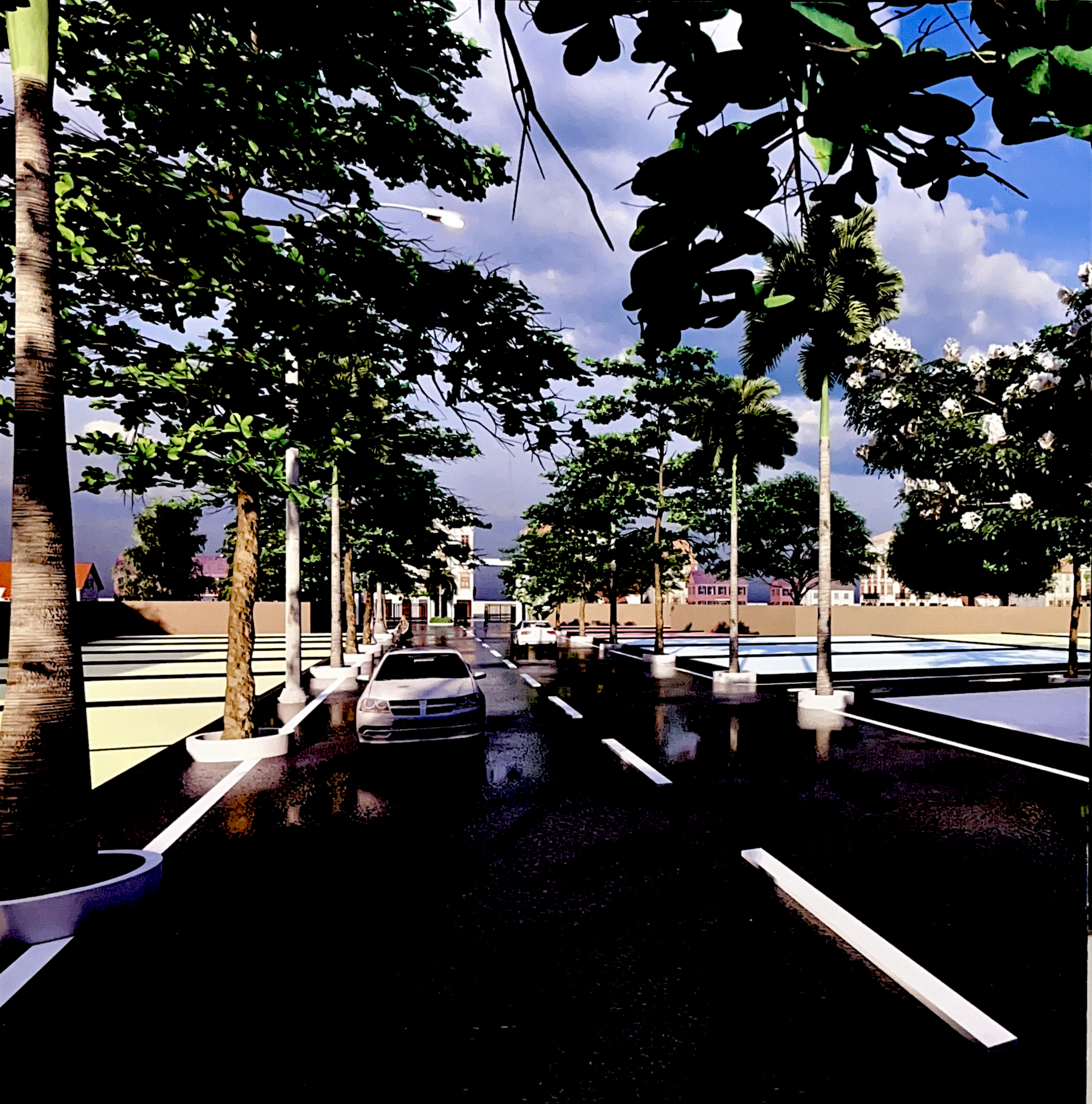
**NARAYANI**

**GREENS**

LIVING GREEN, LIVING GRAND

RERA NO.: PCGRERA010923001663









# ABOUT NARAYANI GREENS

Welcome to Narayani Greens – A large scale Spread across over 7.27 acres the first of its Unga. It has been conceived & designed with the purpose of creating a serenity living habitat, that is a celebration of nature and is a complete universe in itself. Narayani Greens is located on Unga, Dist Korba, Chhattisgarh. Array of 15+ lifestyle amenities spread across Grand Clubhouses and the central greens. every care has been taken to offer you enriched air quality. Be it inside or outside your home, every breath you take will be filled with the freshness and goodness of purifying plants Be it the Kid's focused amenities.



# SAFETY SERVICE

ELEVATE YOUR DREAMS WITH  
UNPARALLELED SECURITY

At NARAYANI GREENS, we take pride in offering more than just plots of land; we provide you with an unparalleled sense of security and tranquility. In today's fast-paced world, finding a place where you can truly call home, a sanctuary for your future, is of utmost importance. That's why we've gone above and beyond to create a haven that offers the best in security and privacy.

Our community is encircled by robust boundary walls, forming an impenetrable fortress that keeps unwanted intruders at bay. You can relax and enjoy your plot, knowing that your privacy is upheld and your family's safety is a top priority.





**WHERE EVERY ARRIVAL  
IS A GRAND EXPERIENCE**

**NARAYANI GREENS**



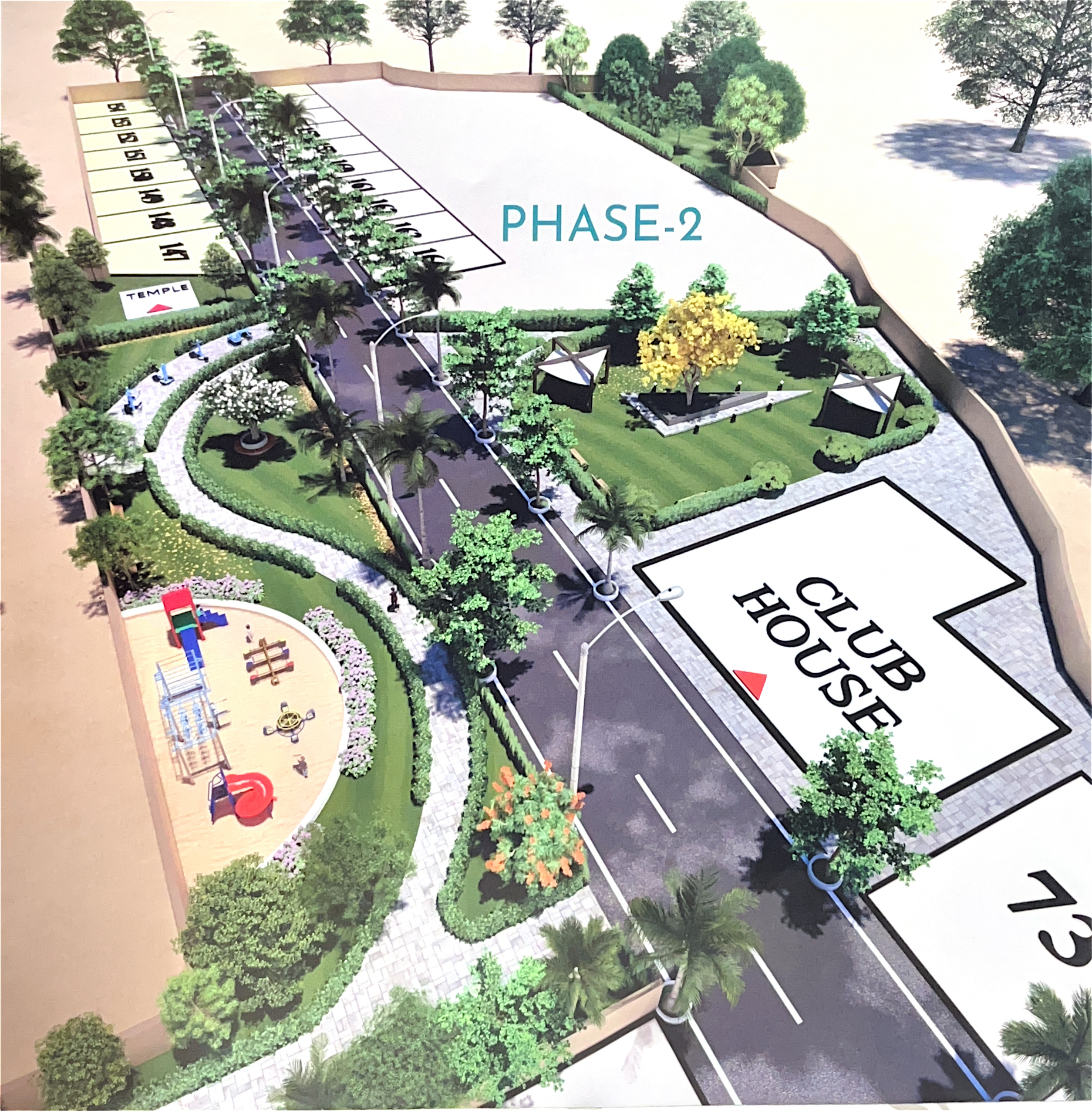


# PHASE-2

CLUB  
HOUSE

TEMPLE

73





# AMENITIES



**CLUB SARVAMANGLA** : Unwind and socialize in our state-of-the-art clubhouse. From fitness facilities to lounges, it's your haven of relaxation and recreation



**OPEN AREA PARK** : Nature's beauty awaits you in our sprawling open park space. Whether you're taking a leisurely stroll or enjoying a picnic, it's a retreat for all ages.



**PLAY AREA** : Watch your kids' laughter fill the air as they explore our thoughtfully designed play area. Safety and fun are guaranteed!



**STREET LIGHTING** : Safety is paramount in our community. Our well-lit streets ensure a secure environment for evening walks and late-night drives.



**LANDSCAPING & TREE PLANTING** : Immerse yourself in lush greenery and carefully curated landscaping. It's not just a backdrop; it's a living canvas that enhances your surroundings.

Experience the art of refined living at **NARAYANI GREENS**. Explore our plots today and embrace a lifestyle enriched by these incredible amenities. *Your dream home starts here!*



# FACILITIES

INTERNAL ROADS & FOOTPATHS

WATER SUPPLY LINE

SEWERAGE (CHAMBER, LINES, SEPTIC TANK)

SOLID WASTE MANAGEMENT & DISPOSAL

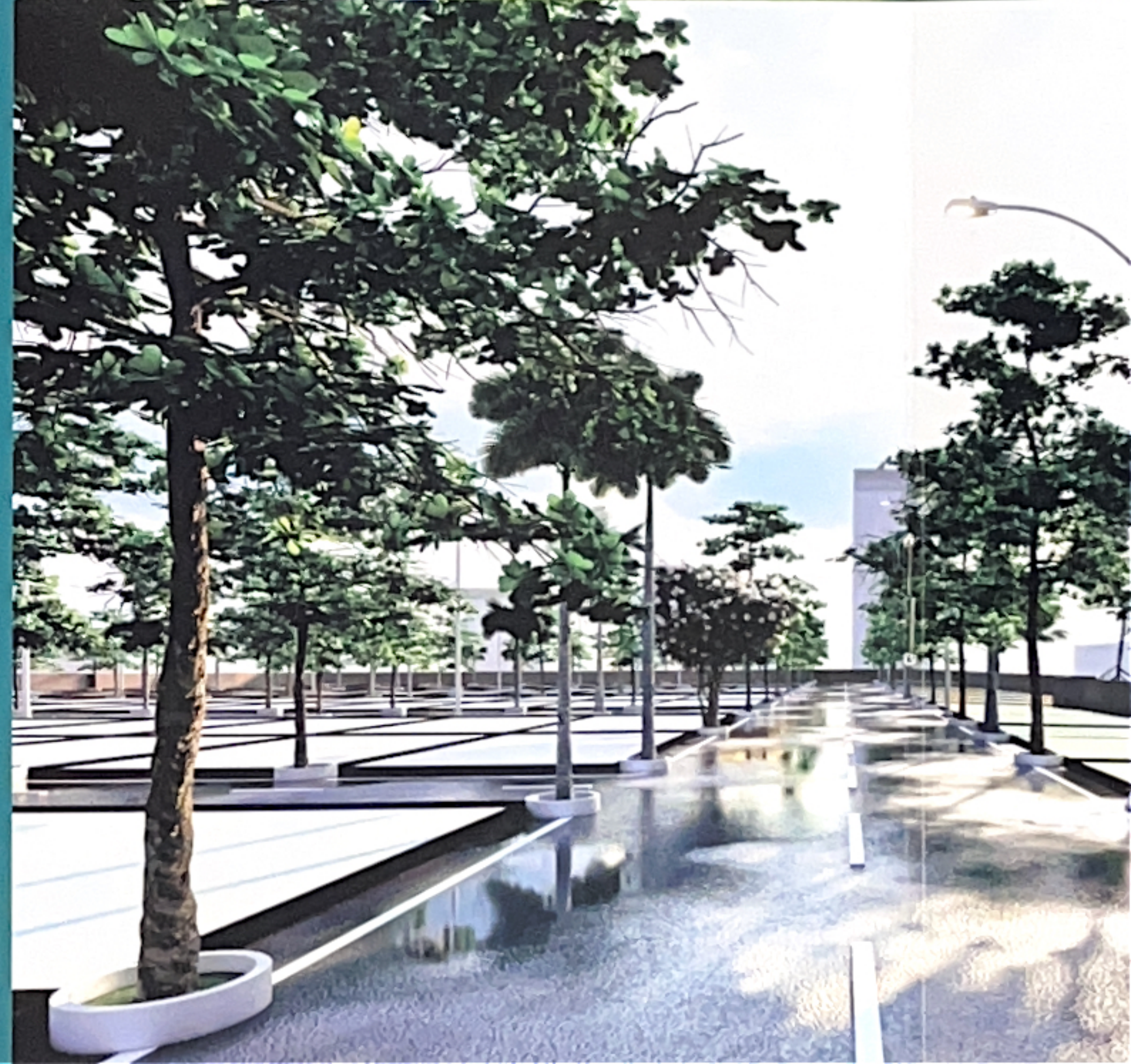
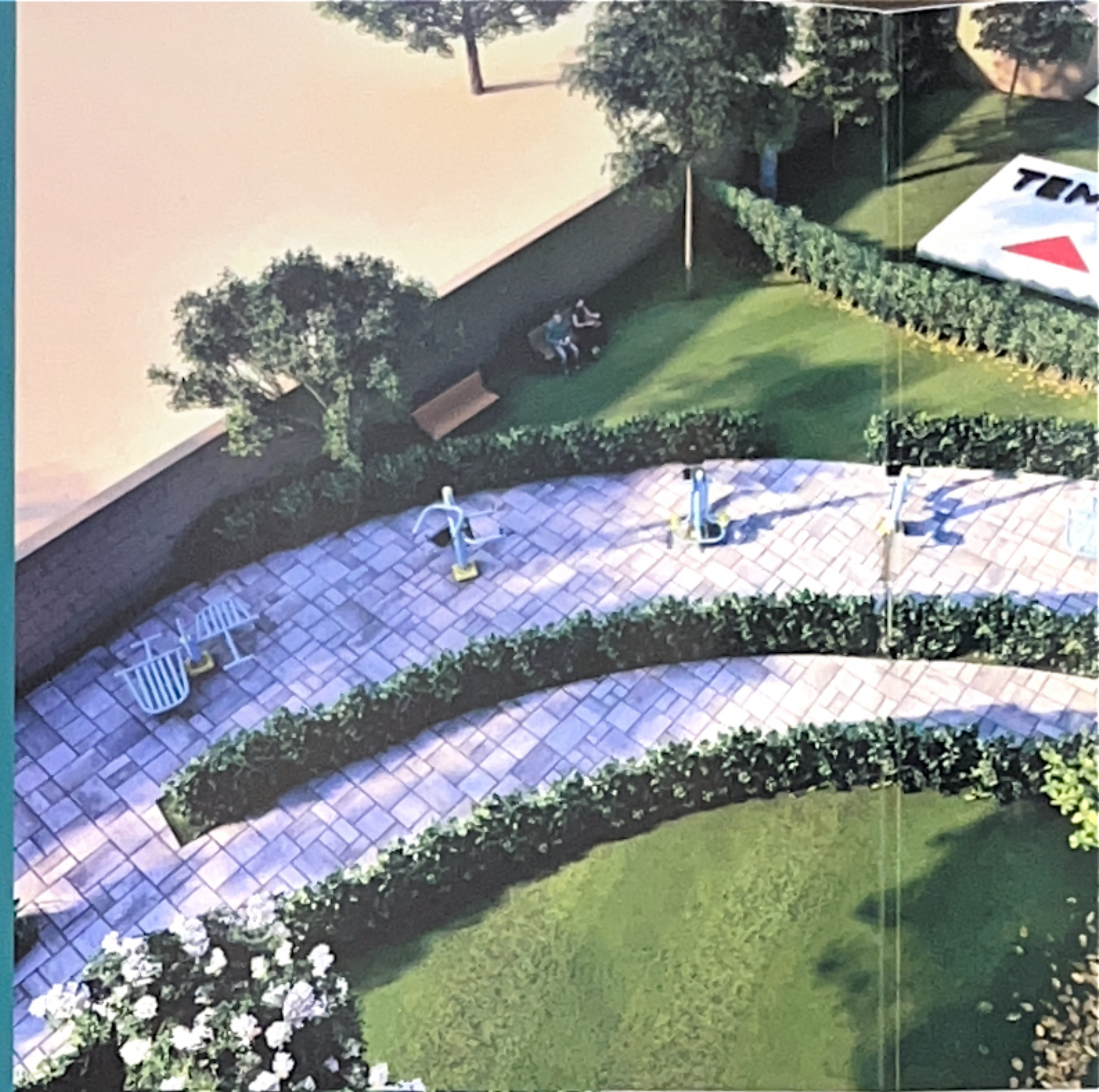
WATER CONSERVATION, RAIN WATER

HARVESTING

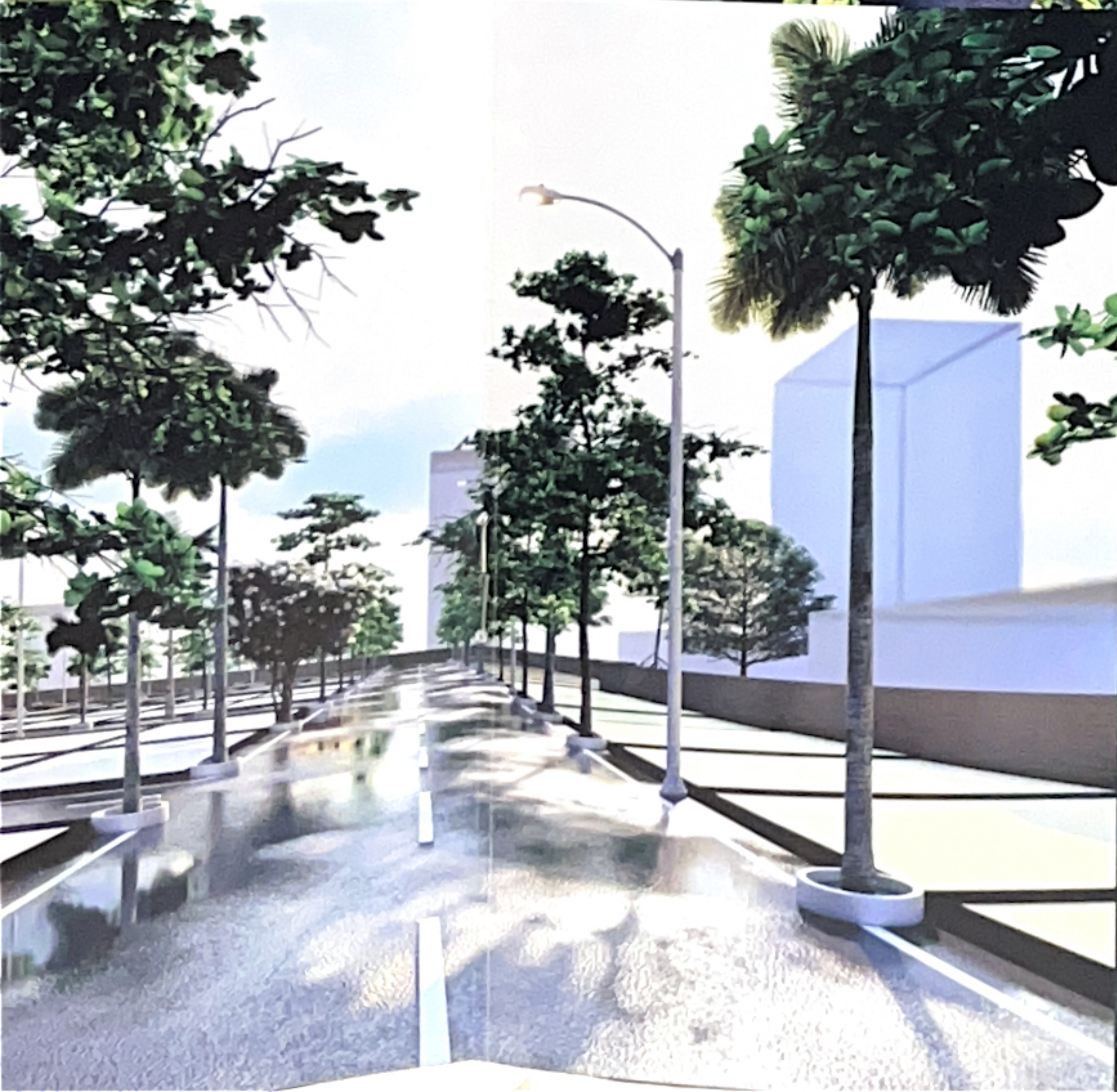
ELECTRIFICATION

GATED BOUNDARY WALL

SECURITIES









**YOUR RETREAT TO LUXURY  
BEGINS HERE...**







# CLUB SARVAMANGLA

THE EMBODIMENT OF LUXURY,  
LEISURE, AND COMMUNITY LIVING  
AT ITS FINEST.

As you step into our Club , you'll be greeted by an air of sophistication and warmth. The modern design, with its tasteful blend of aesthetics and functionality, creates an inviting atmosphere that draws residents in.

Our Club offers an array of amenities to cater to your diverse interests and needs. Whether you're a fitness enthusiast looking to stay in shape at our well-equipped gym, a social butterfly seeking a place to host gatherings, or someone in search of a peaceful escape in the beautifully landscaped gardens, we have you covered.

Our Club goes beyond facilities, fostering a vibrant community. We host events, workshops, and activities that unite residents, creating a strong sense of togetherness. It's where stories, laughter, and bonds flourish.



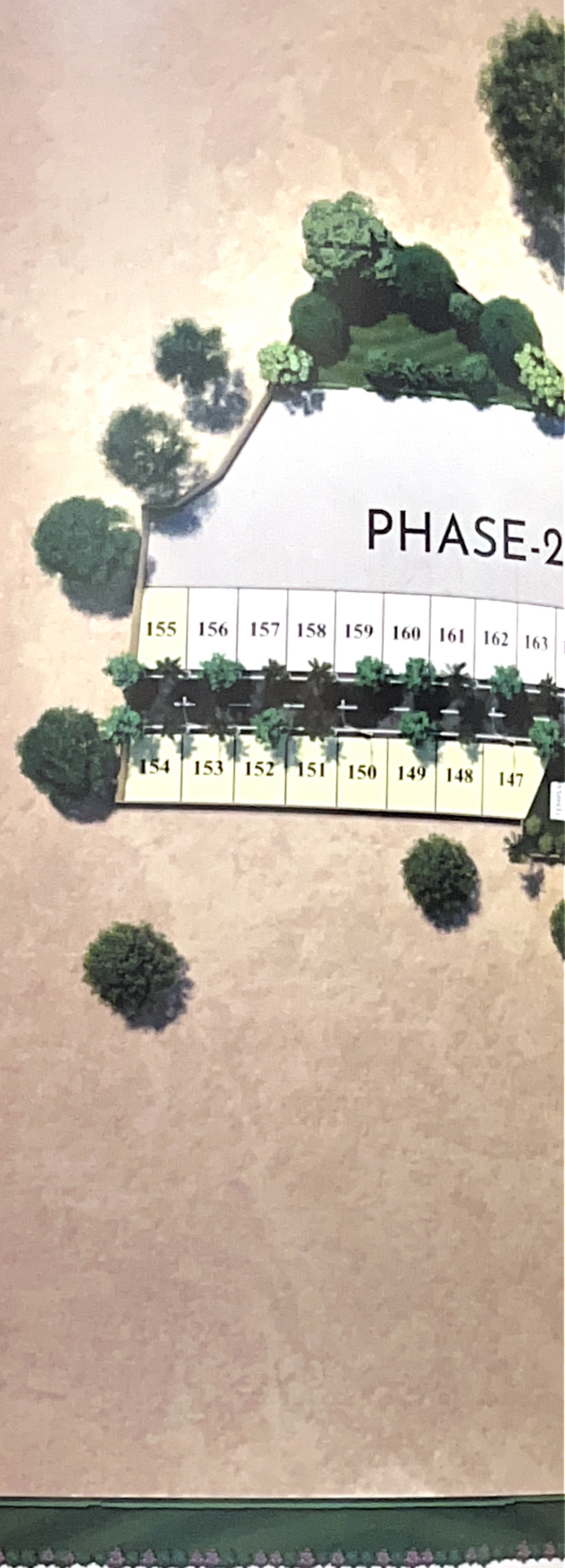
# LAYOUT PLAN

## DISCOVER YOUR PERFECT PLOT: WHERE DREAMS TAKE ROOT

Are you ready to embrace a future defined by your vision? Our meticulously designed layout plans offer more than just plots; they are canvases for your aspirations.

Imagine a landscape where every inch is thoughtfully crafted to harmonize with your desires. Our layout plans are a symphony of innovation and practicality, designed to blend seamlessly with the environment while accommodating your unique lifestyle.

From the moment you step onto these plots, you'll sense the careful attention to detail. Tranquil green spaces intertwine with vibrant community hubs, offering a balance between serenity and social engagement. The paths wind through the terrain, connecting you with nature and your neighbors.







CLUB HOUSE

C3

C2

C1

PARKING



# CREATING A LIFESTYLE THAT REVOLVES AROUND YOUR NEEDS...



HOTEL RELEAXIN 170 mtr.



ARYAN PUBLIC SCHOOL 1 km.



PATROL PUMP 700 mtr



SBI BANK UGRA 990 mtr.



UGRA BUS STAND 870mtr.



UGRA RAILWAY SATION 2.15 km.



PATROL PUMP 900 mtr



KORBA OLD BUS STAND 10km



LANCO PLANT 2.5km.





**NARAYANI  
GREENS**  
LIVING GREEN, LIVING GRAND

BILASPUR  
URGA



RANCHI DHARMA SGARH ROAD







**NARAYANI**  
— GREENS —

**A PROJECT BY :  
SARVAMANGLA BUILDCON**

**PROJECT NAME :  
NARAYANI GREENS**

**SITE ADDRESS :  
VILLAGE - URGHA, DIST-KORBA, CHHATTISGARH**

**OFFICE ADDRESS :  
107, BEHIND UNION BANK TRANSPORT NAGAR, DIST - KORBA (CG.)**

**MOBILE NO.:  
8529781399, 9827114081**

**E-MAIL :  
sarvamanglabuildcon@gmail.com**

**WEBSITE :  
sarvamangalabuildcon.com**